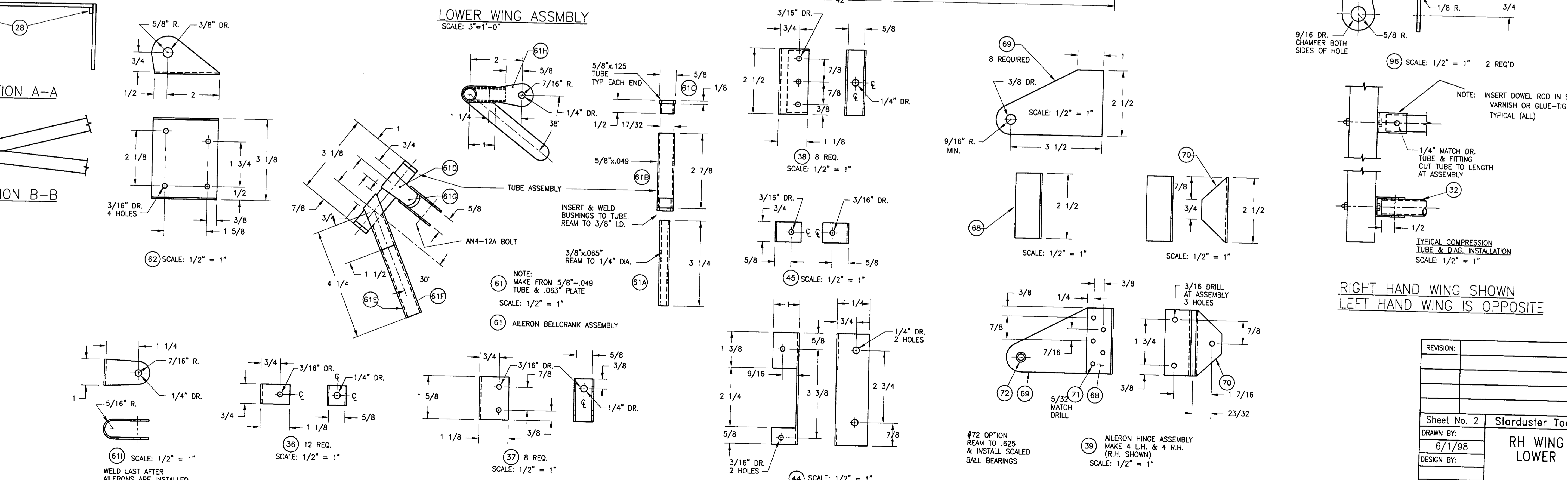


NOTE: #61 CRANK ARM ON BELL CRANK MUST BE 90° FROM SPAR WHEN AILERON IS NEUTRAL

NOTE: BEFORE WELDING #63 IN PLACE -  
 1. ATTACH AILERON TO WING.  
 2. INSTALL SHORT PUSH ROD (#64).  
 3. ADJUST #63 UNTIL RADIUS & ANGLE ARE OBTAINED. AILERON TRAVEL WILL BE 18" DOWN, 30" UP.  
 4. MAKE CERTAIN NEITHER PUSHROD BEARING BINDS DURING FULL TRAVEL.

OPTIONS: INSTALL GREASE FITTING ON BELL CRANK TO ALLOW LUBRICATION OF BEARINGS.

**LOWER WING ASSEMBLY**  
 SCALE: 3"=1'-0"



RIGHT HAND WING SHOWN  
 LEFT HAND WING IS OPPOSITE

REVISION:	

Sheet No. 2 Starduster To  
 DRAWN BY: 6/1/98  
 DESIGN BY: RH WING LOWER

129 Chuck Yeager Way, Orc  
 PHONE: 530-534-7434 FAX  
 WEB SITE: www.starduster.com

PRODUCT NAMES AND PLANS ARE COPYRIGHTED. ALL RIGHTS RESERVED. PLANS PURCHASER IS AUTHORIZED TO BUILD ONE AIRPLANE ONLY. UNAUTHORIZED REPRODUCTION, OR COMMERCIAL USE OF THESE PLANS EXPRESSLY PROHIBITED.