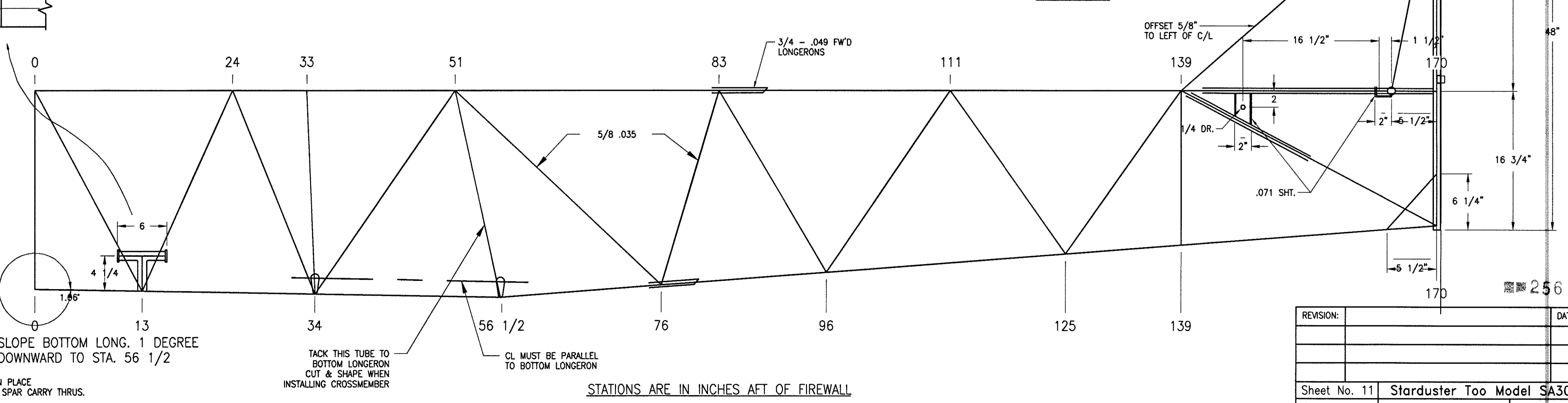
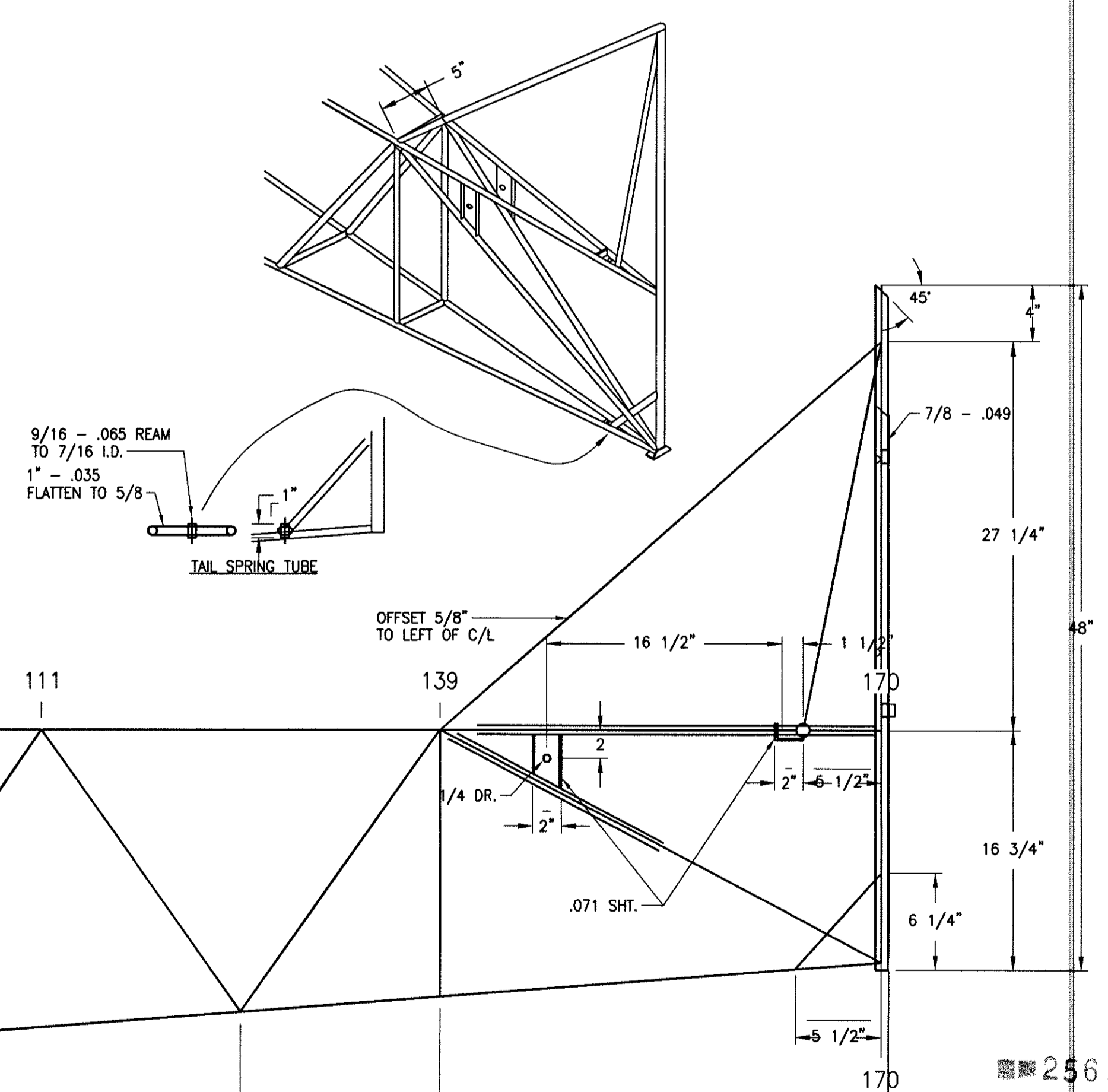


NOTE
TUBE SIZE (UNLESS NOTED):
3/4" - .035 FORWARD OF SPLICE
5/8" - .035 AFT OF SPLICE



STATIONS ARE IN INCHES AFT OF FIREWALL

NOTE:
ASSEMBLE CARRY THRS WITH FULL LENGTH (APPROX. 25 1/16)
BUSHING WELDED IN PLACE AFTER WELDING TO FUSELAGE CUT
CENTER PIECE OF 2/16-.085 OUT.

NOTE:
RECTANGULAR TUBING HAS BEEN USED IN PLACE
OF STREAMLINE BY SOME BUILDERS FOR SPAR CARRY THRS.

REVISION:	DATE:
Sheet No. 11	Starduster Too Model SA300
DRAWN BY:	6/1/98
DESIGN BY:	FUSELAGE
129 Chuck Yeager Way, Oroville, CA 95965	
PHONE: 530-534-7434 FAX: 530-534-7451	
WEB SITE: www.starduster.com	