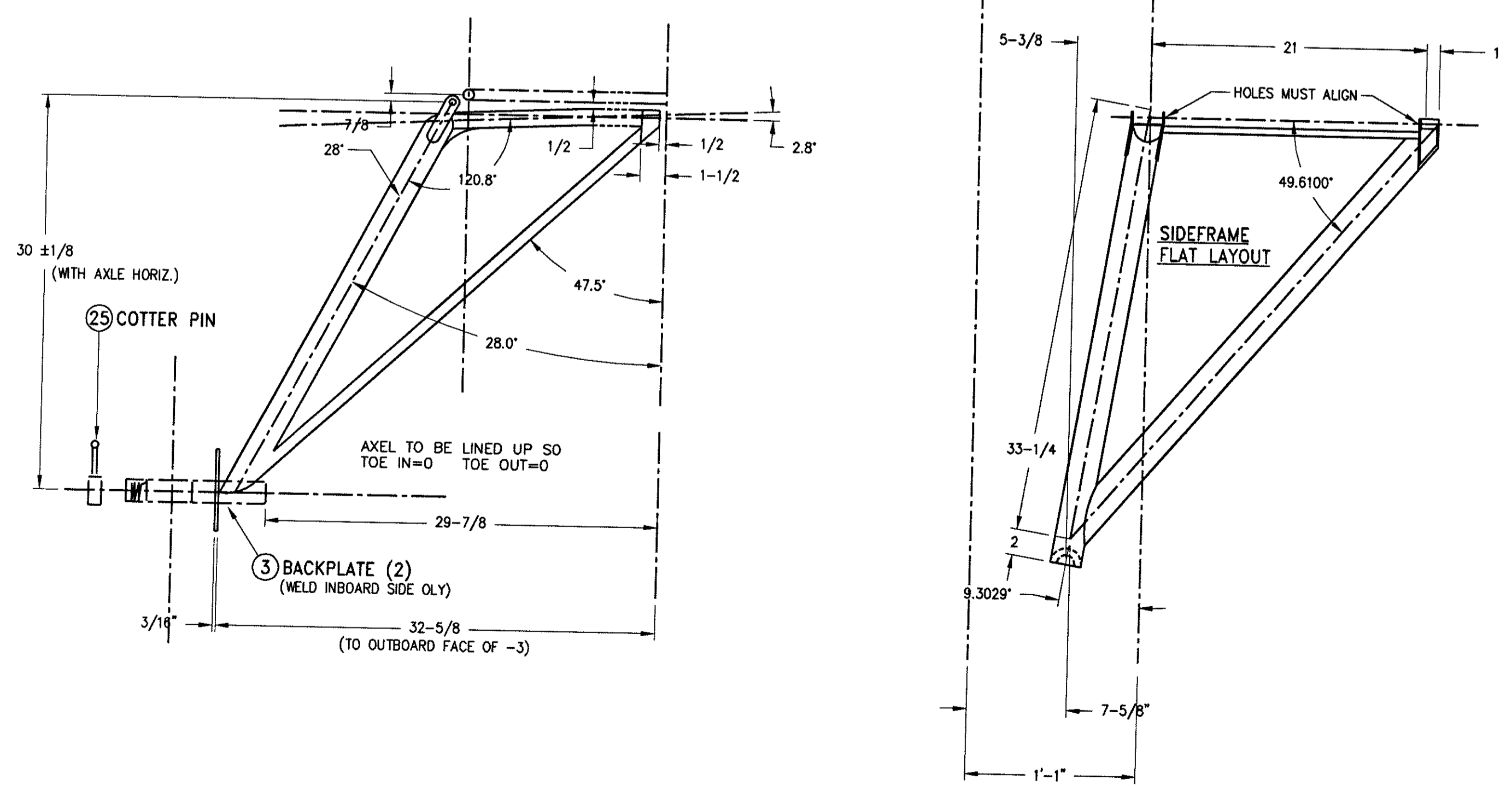


**ASSEMBLY - LANDING GEAR MODEL SA300**



NOTE:  
LANDING GEAR AXLE LOCATION IS REFERENCED TO FIREWALL WITH AIRCRAFT IN LEVEL POSITION. USE CENTER OF AXLE.

NOTE:  
EARLY STARDUSTERS HAD LANDING GEAR FROM 0 TO 2" BEHIND FIREWALL. LATER DESIGN MOVED GEAR TO ABOUT 7 1/2 TO 8" BEHIND FIREWALL.

REVISION:	DATE:
Sheet No. 14	Starduster Too Model SA300
DRAWN BY:	6/1/98
DESIGN BY:	LANDING GEAR
129 Chuck Yeager Way, Oroville, CA 95965	
PHONE: 530-534-7434 FAX: 530-534-7451	
WEB SITE: www.starduster.com	

PRODUCT NAMES AND PLANS ARE COPYRIGHTED ALL RIGHTS RESERVED-PLANS PURCHASER IS AUTHORIZED TO BUILD ONE AIRPLANE ONLY-UNAUTHORIZED REPRODUCTION, OR COMMERCIAL USE OF THESE PLANS EXPRESSLY PROHIBITED.